

# Nozzle and Holder Assembly



## Criteria:

- dismantled / incomplete
- mechanical damage
- corrosion
- not identifiable

**Criterion: dismantled / incomplete**

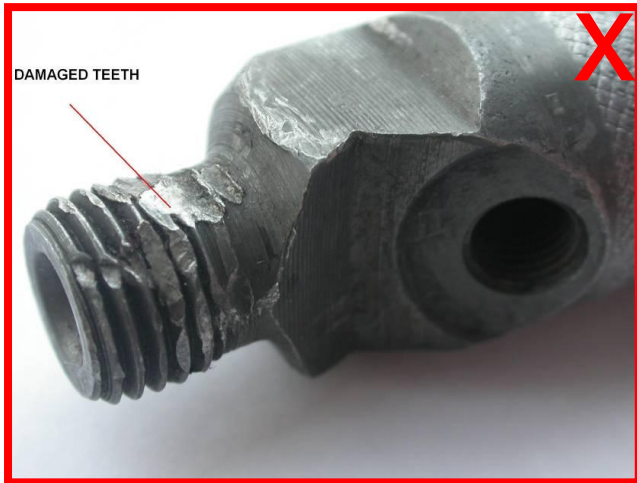


dismantled → not acceptable



tube missing → not acceptable

## Criterion: mechanical damage



thread deformed → not acceptable



tube with inserted nuts → not acceptable

## Criterion: corrosion



slight corrosion on surface  
without material removal  
→ acceptable